



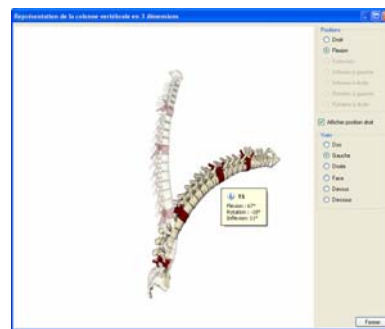
PRESS RELEASE



RM INGENIERIE LAUNCHES BIOVAL®,

## A HI-TECH PHYSICAL THERAPY MODULE

PRESENTED AT THE 44<sup>TH</sup> ANNUAL EQUIP'SALLES WORLD TRADE FAIR



**Paris, October 2, 2008** - Cegedim Group subsidiary RM Ingénierie (RMI), specialist in medical and paramedical management software, announces the launch of BioVal ®, an innovative solution for body movement analysis and physical therapy designed for medical professionals.

This marriage of advanced technologies is the result of our close partnership with the Movea company, an offshoot of the Grenoble-based French Atomic Energy Commission (CEA). BioVal®'s **global launch is planned for the 44th annual Equip'salles world trade fair**, to be held October 3-5 2008 at the Parc Floral in Paris.

BioVal® employs the same **"motion capture"** techniques used in 3D films. Small wireless sensors, about the size of a watch face, measure body movements in real time. The therapist can then create dated read-outs of articular mobility (ankle, knee, hip, wrist, shoulder, etc.), compare them over time, create 3D representations of the spinal column, and have the patient perform numerous physical therapy exercises by using the computer to monitor their movements while exercising.

## An avant-garde solution tailored to medical practices

A veritable body movement “research facility”, BioVal® reinforces the therapist’s **ability to observe, measure and monitor in detail** the patients’ gestures while developing **their mobility and balance**.



BioVal® uses MotionPod, a small, ultralight unit about the size of a watch. MotionPod has sensors and can be positioned anywhere on the body. Produced with the most advanced miniaturization techniques, it lets the user make quick, precise and complete calculations and medical diagnostics.

*In the blink of an eye, body movements are recorded at a rate of **30 measurements per second**. The software supplies real-time curves that update the therapist on the patient’s condition.*

The playful presentation of the exercises **frees up the therapist and makes it easier for the patient to participate** by asking him to mimic movements on screen with the help of 3D viewing glasses supplied by the physician. By getting more involved, the patient is more aware of his physical condition and the therapy strategy he needs to follow.

BioVal® is perfectly adapted to the needs of a medical practice. It allows the therapist to program the prescribed range of motion, and a warning sound lets the patient know if he has gone past the recommended level. For patients with neurological illnesses, the recommended repetitive exercises help reprogram their neurosensory circuits.

For exercises that require patients to learn how to support themselves, BioVal® can be paired with a **B.Plate force platform** equipped with a MotionPod. This function lets the therapist work on the patient’s balance by using visual feedback and having them perform proprioception exercises or ankle exercises.

The **B.Activ physical therapy system**, offered as an option, is a terrific complement to the equipment. By placing the MotionPod unit on a vertical piece of material, such as a stadiometer, the system facilitates work on extending the spinal column and articular mobility therapy, with strength constraints and an enjoyable interface.

For more information about Equip’Salles 2008: [www.salonreeducu.com](http://www.salonreeducu.com)

### **About RM Ingénierie (RMI):**

A subsidiary of CEGEDIM Group, the French leader in medical information technology, RMI boasts nearly 25 years’ experience serving healthcare professionals. In 1984, RMI designed France’s first software for managing physical therapy practices. The company now offers a complete range of software (**+4000** range and the **BIORescue** biofeedback solution) for paramedical professionals: nurses, physical therapists, speech therapists, orthoptists, chiropractors, podiatrists, midwives, and so on. With its national presence and specialized customer support center, RMI keeps in close contact and provides high quality services to its 27,000 users. RM Ingénierie belongs to CEGEDIM Group’s “Healthcare and strategic data” division.

To learn more: [www.rminformatique.com](http://www.rminformatique.com)

**About Cegedim:**

Founded in 1969, Cegedim is a global technology and services company specializing in the healthcare field. Cegedim supplies services, technological tools, specialized software, data flow management services and databases. Its offerings are targeted notably at healthcare industries, pharmaceutical companies, healthcare professionals and insurance companies.

The world leader in pharmaceutical CRM, Cegedim is also one of the leading suppliers of strategic healthcare industry data. Cegedim employs more than 8,000 people in 80 countries and generated revenue of €753 million in 2007.

To learn more, please visit our website: [www.cegedim.com](http://www.cegedim.com)

Coté sur NYSE Euronext Paris, compartiment B – ISIN FR0000053506 – Reuters CGDM.PA – Bloomberg CGM

**Presse Contacts**

<b>CEGEDIM</b>	<b>PRESSE &amp; PAPIERS</b>
<b>Sylvie Delangle</b>	<b>Guillaume de Chamisso</b>
Media Relations	Press Officer
Tél. : + 33 (0)1 49 09 67 73	Tel: + 33 (0)1 77 35 60 99
<a href="mailto:sylvie.delangle@cegedim.fr">sylvie.delangle@cegedim.fr</a>	<a href="mailto:guillaume.dechamisso@pressepapiers.fr">guillaume.dechamisso@pressepapiers.fr</a>